



Reference card

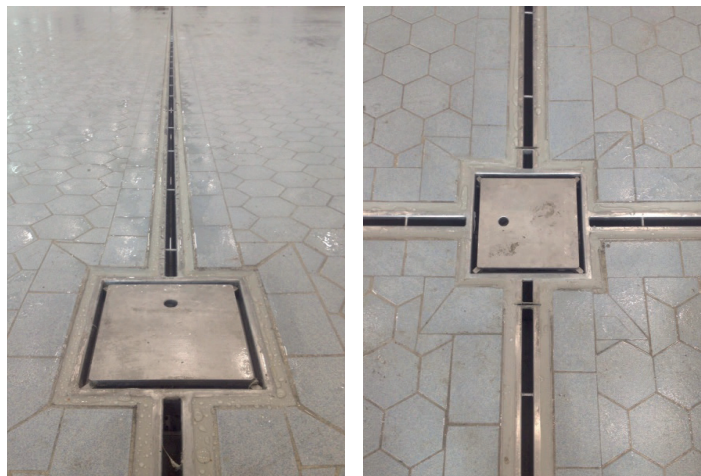
VECO ZUIVEL, THE NETHERLANDS Zeewolde

VECO ZUIVEL, The Netherlands

In 1974 the Van Rouwendaal family began to investigate the different ways of manufacturing dairy products, specifically milk and cheese, and in 1984 they made the decision to focus on producing these products in a natural way.

Today, the business continues to be a family owned company and has its own factory – the Veco Dairy based in Zeewolde. Its key strength is that it uses fresh milk that's delivered direct to its factory by farmers to make its products.

ACO was asked to design and manufacture bespoke slot channel drainage for an extension to its factory in 2015.



Vecozuivel®



Reference card

Project name	Veco Zuivel Zeewolde (The Netherlands)
Brand	Veco Zuivel
Investor	Veco Zuivel Zeewolde (The Netherlands)
City of installation	Zeewolde
Country of installation	The Netherlands
Commissioning date	2015
Country of ACO sales organisation	ACO Doetinchem (The Netherlands)
Segment	Food processing
Subsegment	Food processing (others)

Project information

Project description	The drainage system was required for a new dairy (milk) processing factory where milk is delivered to site by farmers and then processed for major supermarkets.
Key factors of ACO success in this project	The quality of ACO products combined with our ability to provide expert advice veco-extern advisor (Ruud Matton), installation company Dijkstra Epe

Products installed

Product name

ACO modular slot channel 20 - centre outlet

ACO modular slot channel 20 - end outlet

ACO hygienic gully 157 - telescopic

ACO slot cover - 218 x 218

ACO silt basket

for ACO hygienic gully 157 - vertical

