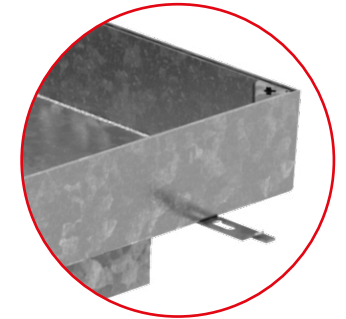
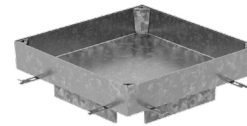


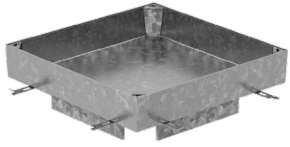
Installation manual

ACO Access Covers - PAVING

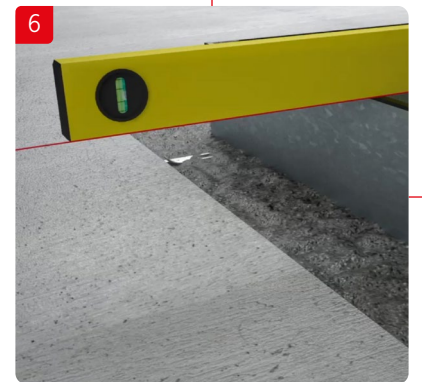
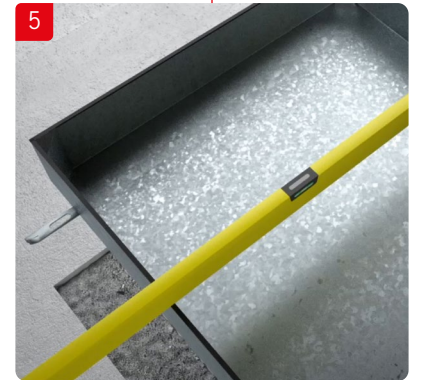
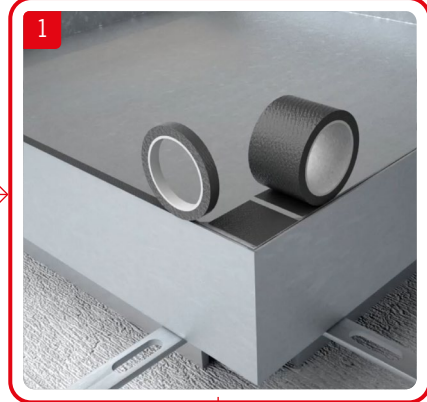
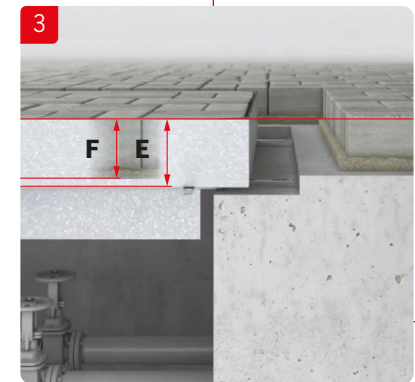
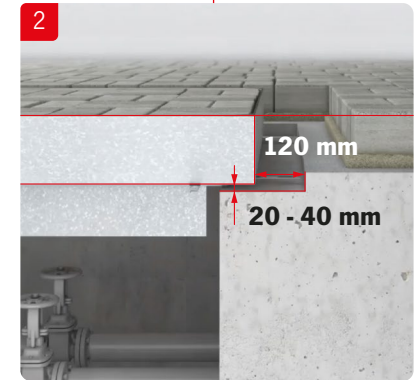
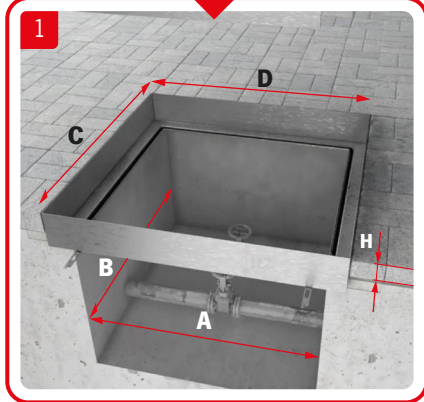


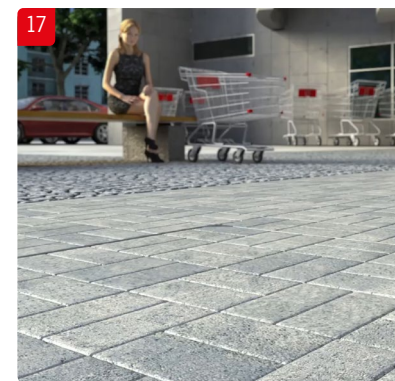
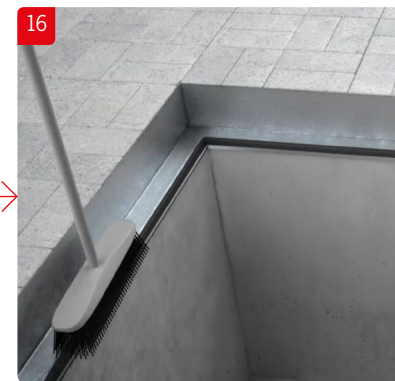
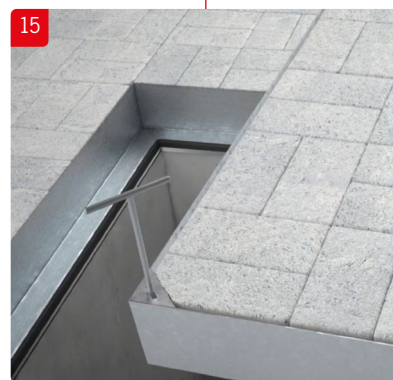
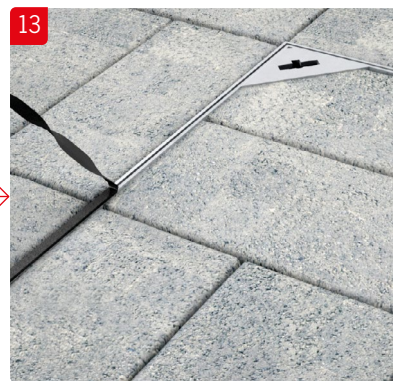
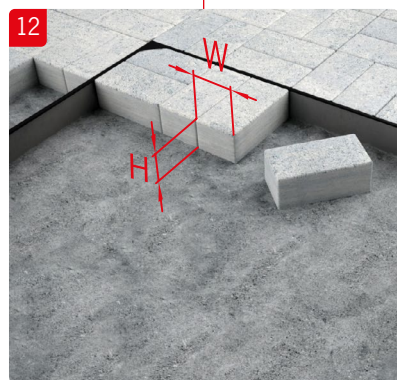
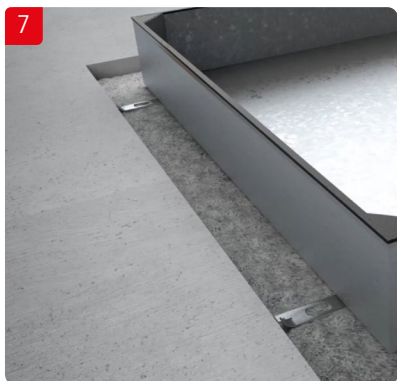
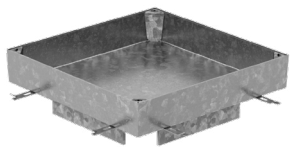
- | | |
|---|---|
| ENG Installation Manual
ACO Access Cover | EST Paigaldusjuhend |
| GER Installationsanleitung
ACO Schachtabdeckungen | LAV Uzstādīšanas instrukcija
ACO Tehnisko lūku vāki |
| FRA Instructions d'installation | LIT Montavimo instrukcija
ACO apžiūros liukai |
| ESP Manual De Instalación
ACO Tapas de registro | POL Instrukcja montażu |
| POR Manual de Instalação | BUL Инструкции за инсталация |
| ITA Manuale d'installazione
ACO Access Cover | HUN Beépítési útmutató |
| NLD Installatiehandleiding
ACO Toegangsluiken | RUM Instrucțiuni de instalare |
| CZE Instalační manuál | HRV Upute za ugradnju |
| RUS Инструкция По Установке | SLV Navodila za vgradnjo |
| SWE Installationsanvisning | SRP Preporuka za ugradnju |
| NOR Installasjons Manual | TUR ACO Müdahale Kapakları |
| FIN Asennusohje | |
| DAN Installationsvejledning | |





Paving LC A15
behavior during installation





ACO. creating the future of drainage

www.aco-accesscovers.com



NM12382 ACO Access covers - PAVING Manual/EN/Q1/21