



The aesthetics of the line

Line drainage – for unique locations





The aesthetics of the line

Line drainage – for unique locations



The aesthetics of the line

ACO DRAIN® surfaces are as diverse as the architectural demands. Function and aesthetics always create a unique relationship.

Be it ductile iron, galvanised steel, stainless steel, plastic or polymer concrete: Our surfaces always suit the situation - or even add aesthetic value. Slotted frames work as a design element in the architectural design; light trails lead the eye into the distance and provide orientation. Individually designed grating systems open the space for inspiration.

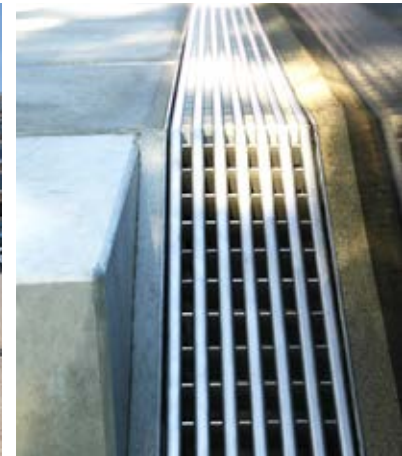
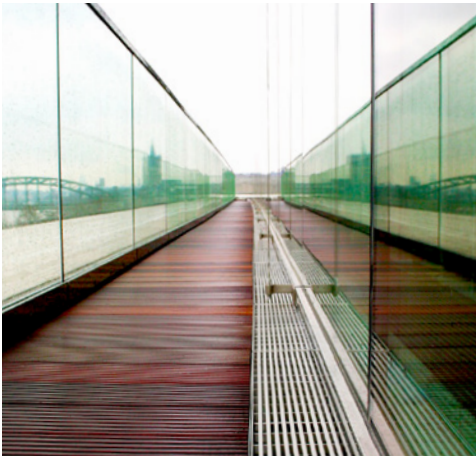
We invite you to join us on a journey to very special places - thanks also to the creative drainage solutions.

Line drainage

■ Gratings	6
■ Slot channels	44
■ Lighting	66
■ Monolith	84

Product & Service	94
------------------------------	----



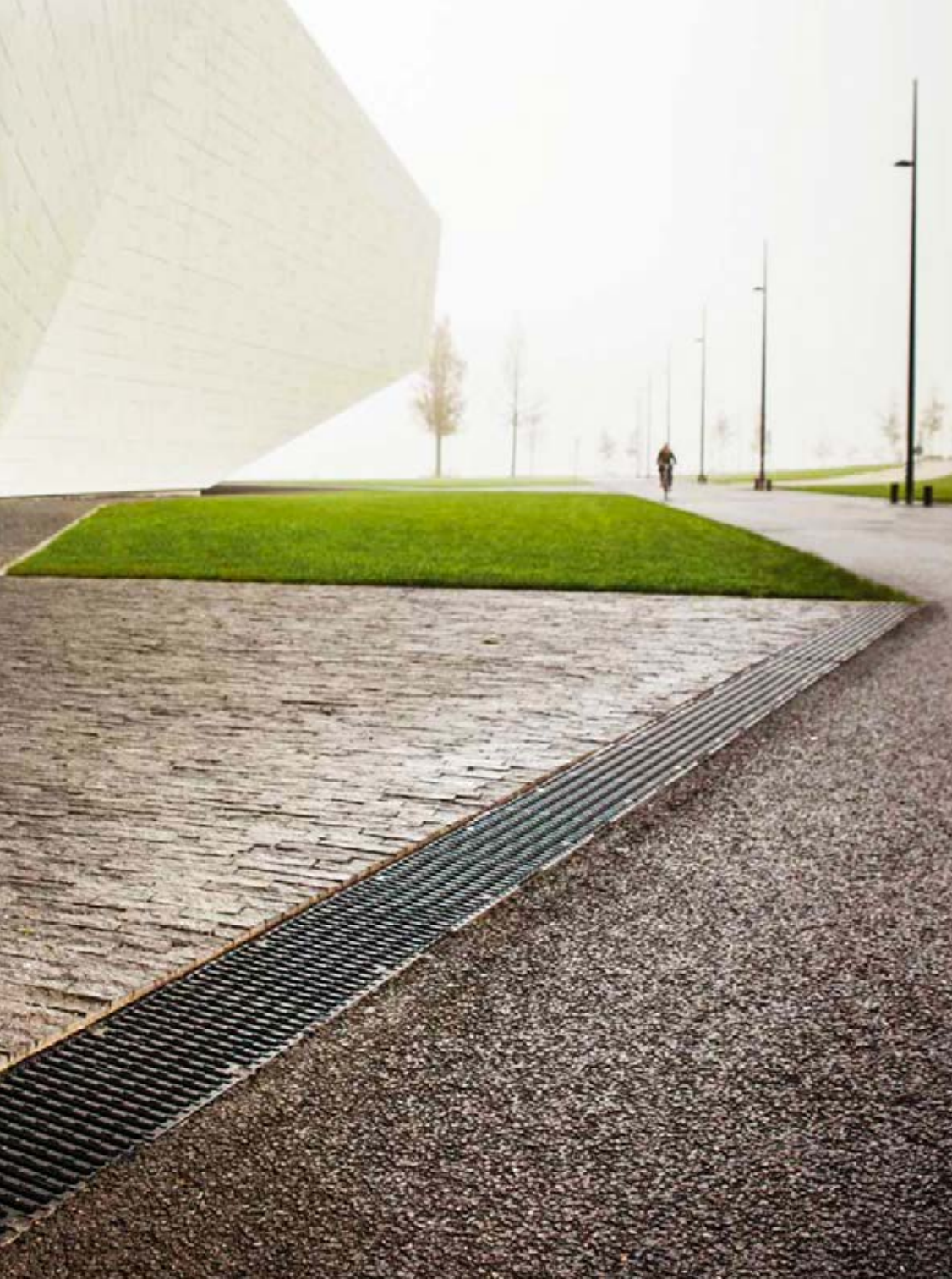


Line drainage with grating

EYE FILMMUSEUM
Amsterdam, Netherlands

■ CAST IRON SLOTTED GRATING | Multiline





„True art is selfish.“

Ludwig van Beethoven



PALEISBRUG
Hertogenbosch, Netherlands

■ CAST IRON SLOTTED GRATING | Multiline







COLEGIO DEL AIRE
Zapopan, Mexiko

■ CAST IRON GRATING FREESTYLE | Multiline

*„The extraordinary
does not happen in a straight,
ordinary way.“*

Johann Wolfgang von Goethe



ERGO INSURANCE GROUP
Hamburg, Germany
■ FACADE DRAINAGE





FURNITURE MALL EKKERSRIJT
Son en Breugel, Netherlands

■ CAST IRON GRATING FREESTYLE | Multiline



TOOSBY TORV (ECCO)
Bredebro, Denmark

● CAST IRON GRATING FREESTYLE | Multiline



DE BLOB
Eindhoven, Netherlands
■ SLOTTED GRATING | Multiline



*„The noblest
of the elements
is water.“*

Pindar





*LE JARDIN D ACCLIMATATION
Stiftung Louis Vuitton – Paris, France*

■ RADIUS CHANNEL

SIL04
Rostock, Germany
■ FACADE DRAINAGE





DC TOWERS
Vienna, Austria
■ FACADE DRAINAGE



COLUMBIA HOTEL
Wilhelmshaven, Germany
■ **FACADE DRAINAGE**

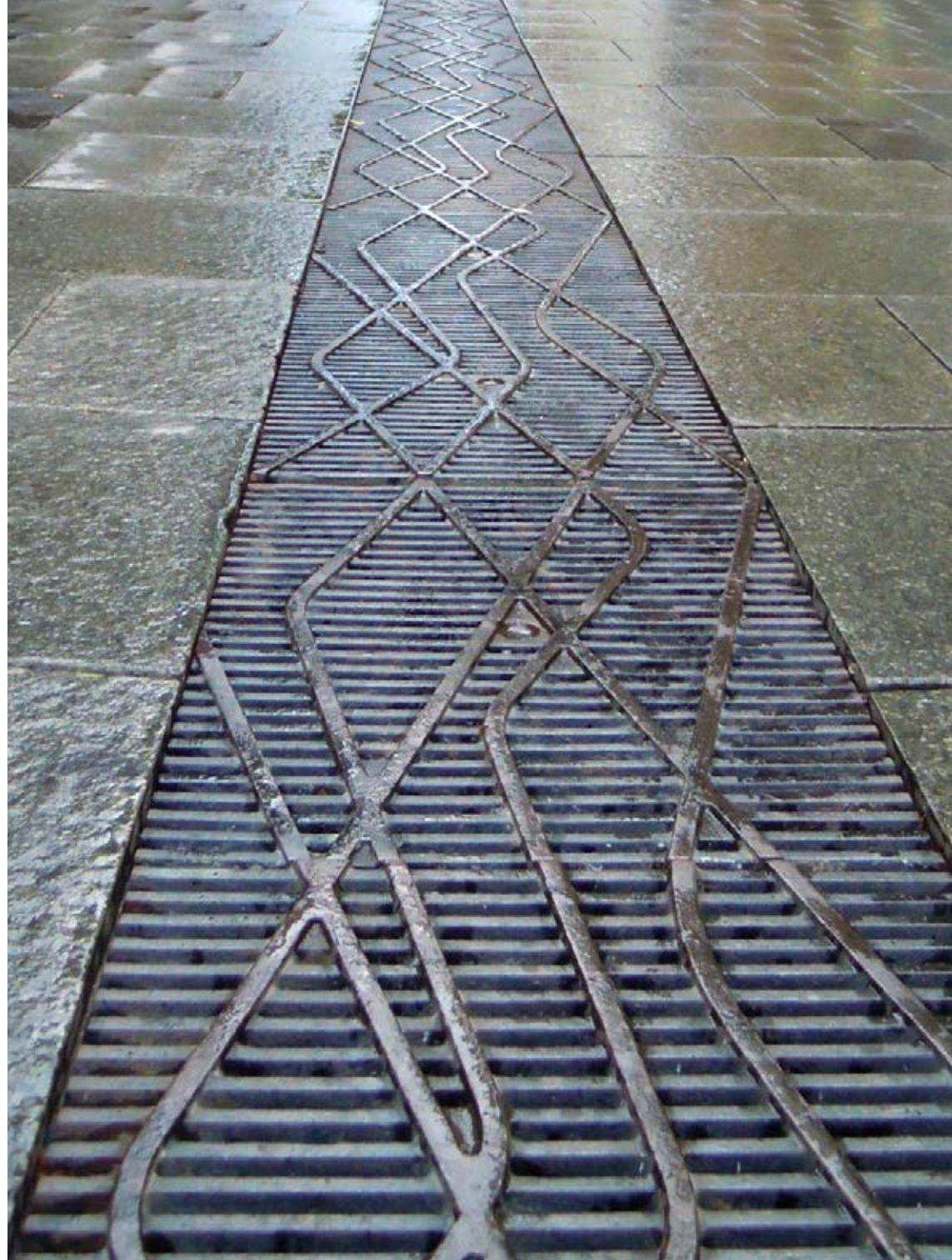


*„It takes many strings
tuned differently
to create harmony.“*

Joseph Karl Benedikt Freiherr von Eichendorff

PITT STREET
Sydney, Australien

■ FREESTYLE | Multiline



*LUNAR PARK
Sydney, Australien*

■ LONGITUDINAL BAR GRATING | Multiline







SOMEWHERE
Somewhere, Somewhere

■ GRATING | Multiline



*„A path is made
by walking on it.“*

Dschuang Dsi



KÄTE AHLMANN HAUS
Büdelsdorf, Germany

■ LÄNGSPROFILROST | Multiline

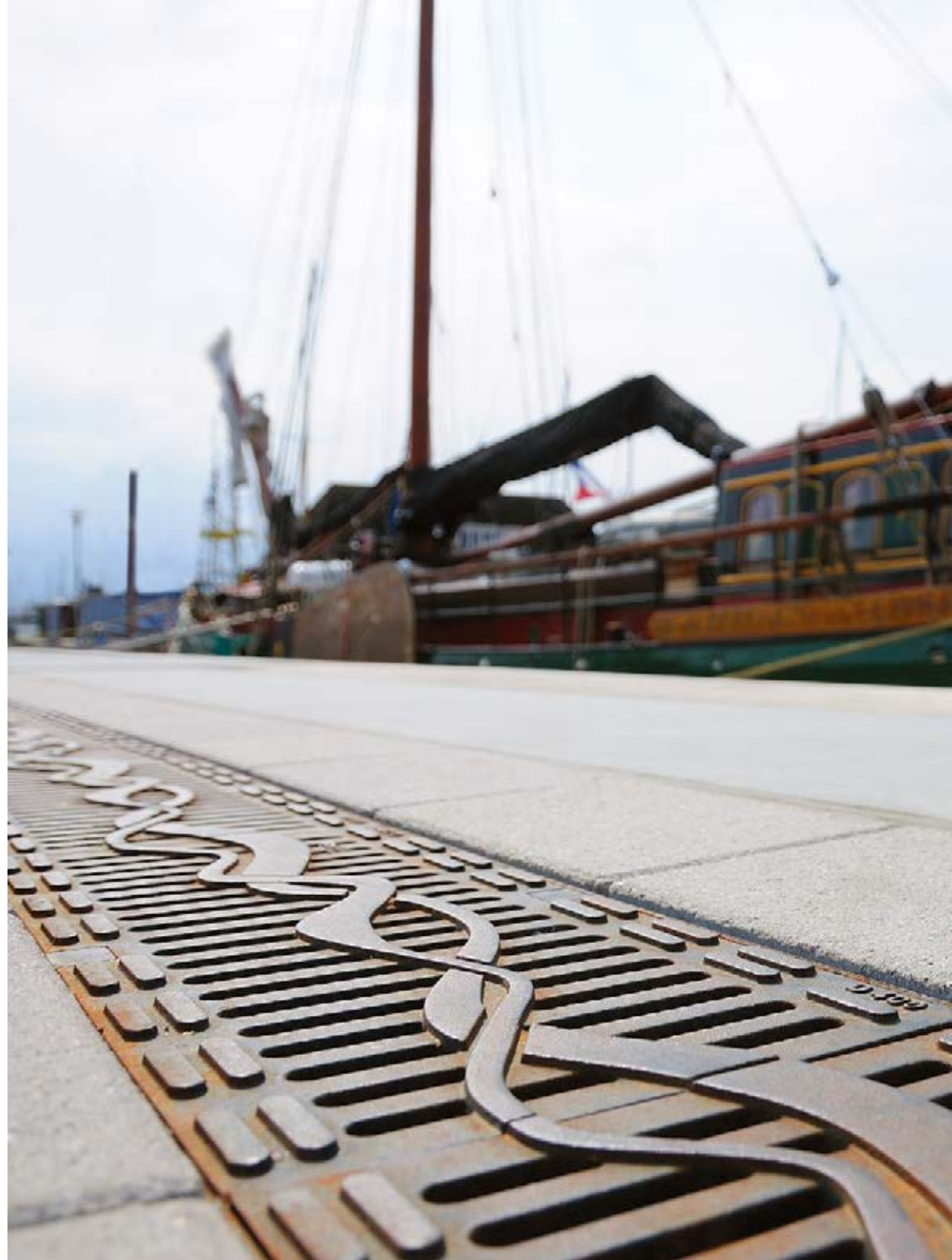
BEACH APPROACH
Hafendorf Müritz, Germany

■ SLOTTED GRATING | Multiline



EXPERIENCE PROMENADE
Laboe, Germany

■ CAST IRON GRATING FREESTYLE | Multiline



*MARKET SQUARE
Geilo, Norwegen*

■ CAST IRON GRATING FREESTYLE | Multiline



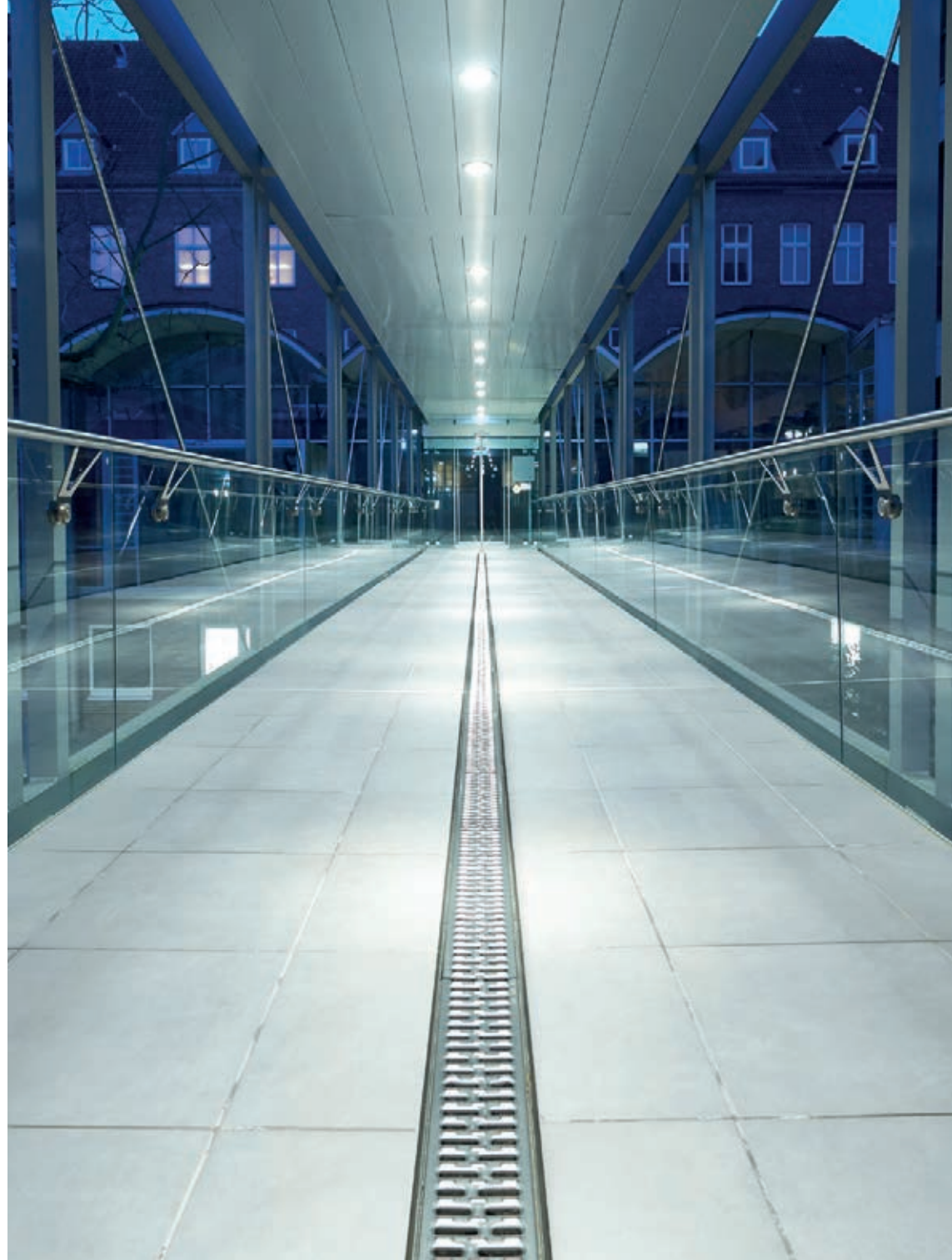


KVÆSTHUSMOLEN, Denmark

■ CORTEN SLOTTED GRATING | Multilne

FÖRDE SAVINGS BANK
Kiel, Germany

■ SLOTTED GRATING | Multiline



RONDO SHOPPING MALL
Büdelsdorf, Germany

■ COMPOSITE GRATING | Multiline





OLD HARBOR
Wismar, Germany

■ SLOTTED GRATING | Multiline



MARINA KORNATI
Zadar, Croatia

■ SLOTTED GRATING | Multiline

*AIRPORT FIRE SERVICE
Leipzig, Germany*

■ SLOTTED GRATING | PowerDrain





*„Power does not make noise,
it is there and acts.“*

Albert Schweitzer

*MESSEGELÄNDE
Hannover, Germany*

■ SLOTTED GRATING | PowerDrain



*CENTRAL RAIL STATION
Vienna, Austria*

■ SLOTTED GRATING | Multiline



BERGPARK WILHEMSHÖHE
Kassel, Germany

■ SLOTTED GRATING | PowerDrain





Line drainage with slot channel

FRIES MUSEUM
Leeuwarden, Netherlands

■ SLOT CHANNEL | Multiline





*COMMUNITY CENTRE
Drimmelen, Netherlands*

■ SLOT CHANNEL | Multiline



GARE DES GUILLEMINS
Liège, Belgium

■ SLOT CHANNEL | Multiline





GARE DES GUILLEMINS
Liège, Belgium

■ SLOT CHANNEL | Multiline



*„Even detours
expand our horizons.“*

Ernst Ferstl

ALMERE POORT
Almere, Netherlands

■ SLOT CHANNEL | Multiline



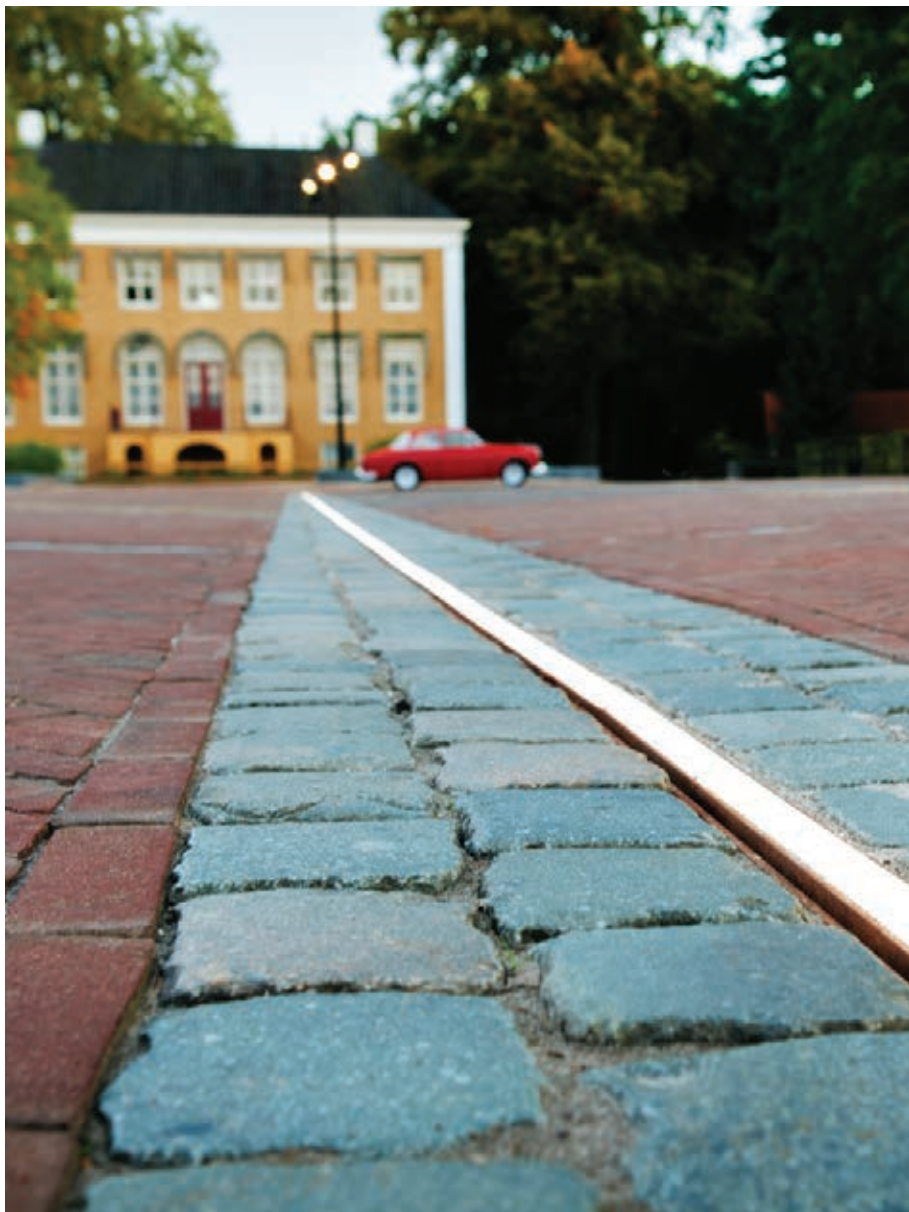
HOTEL D-RESORT ŠIBENIK
Mandalina, Croatia

■ SLOT CHANNEL | Multiline

MUNICIPAL OFFICES
Jaarbeursplein, Netherlands

■ SLOT CHANNEL | Multiline





PARK WIJHEZICHT
Wijhe, Netherlands

■ SIDELINE with LED lighting | Multiline



RIPPERDA BARRACKS
Haarlem, Netherlands

■ SLOT CHANNEL | Multiline



VILLE DE VILLEFRANCHE DE ROUERQUE
Aveyron, Frankreich

■ SLOT CHANNEL | Multiline



PARLAIS LIECHTENSTEIN
Vienna, Austria

■ SLOT CHANNEL | Multiline

*"History
does not end
with us."*

Sokrates





RIJKOOMPJE
Veenendaal, Netherlands

■ SLOT CHANNEL | Multiline



SOMEWHERE
Somewhere, Somewhere

■ SLOT CHANNEL | Multiline

CITY CENTRE
Plovdiv, Bulgaria

■ SLOT CHANNEL | Multiline





LUKA GAZENICA
Zadar, Croatia

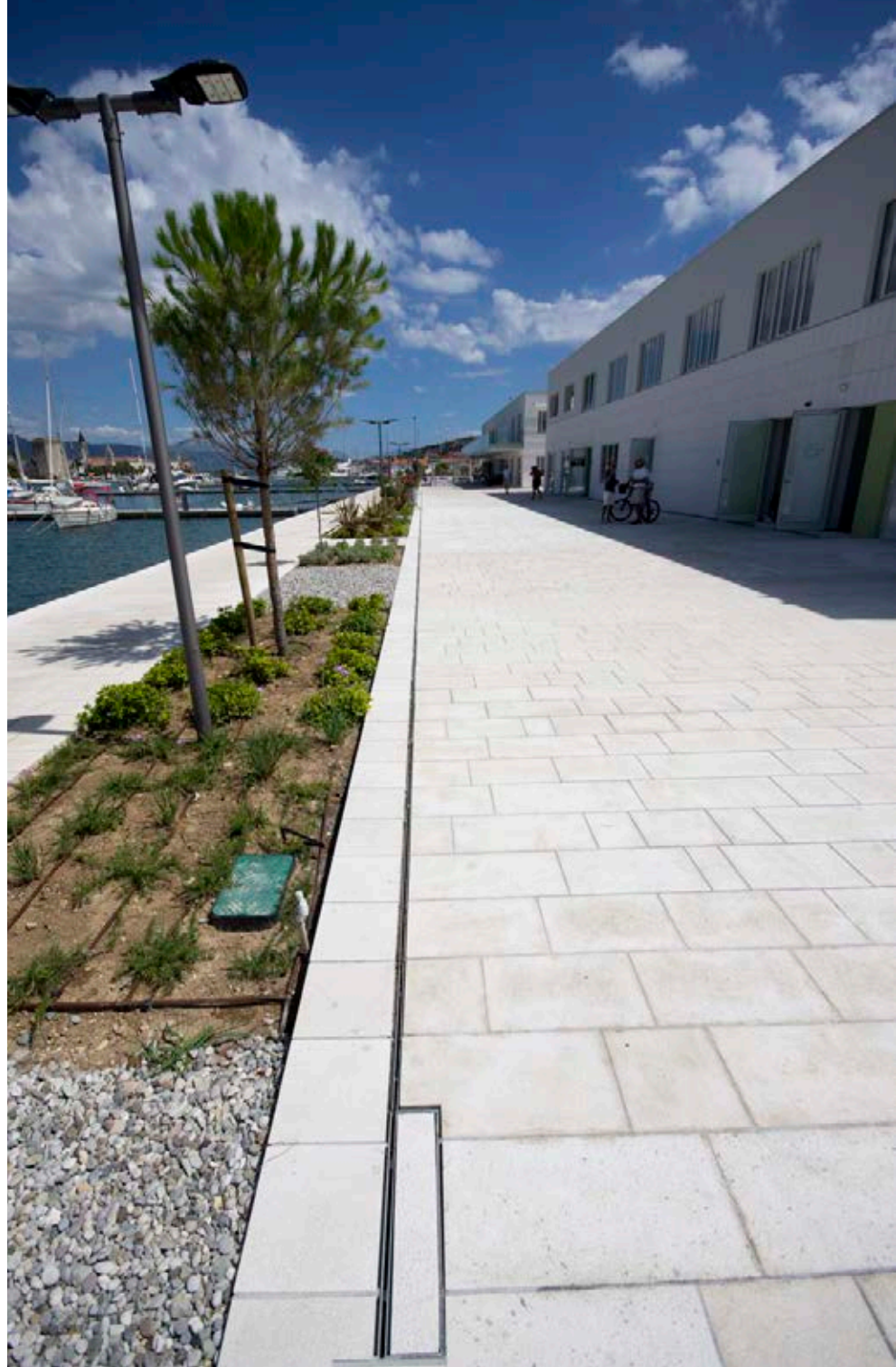
■ Q-GUARD | Qmax



SOMEWHERE
Somewhere, Somewhere land

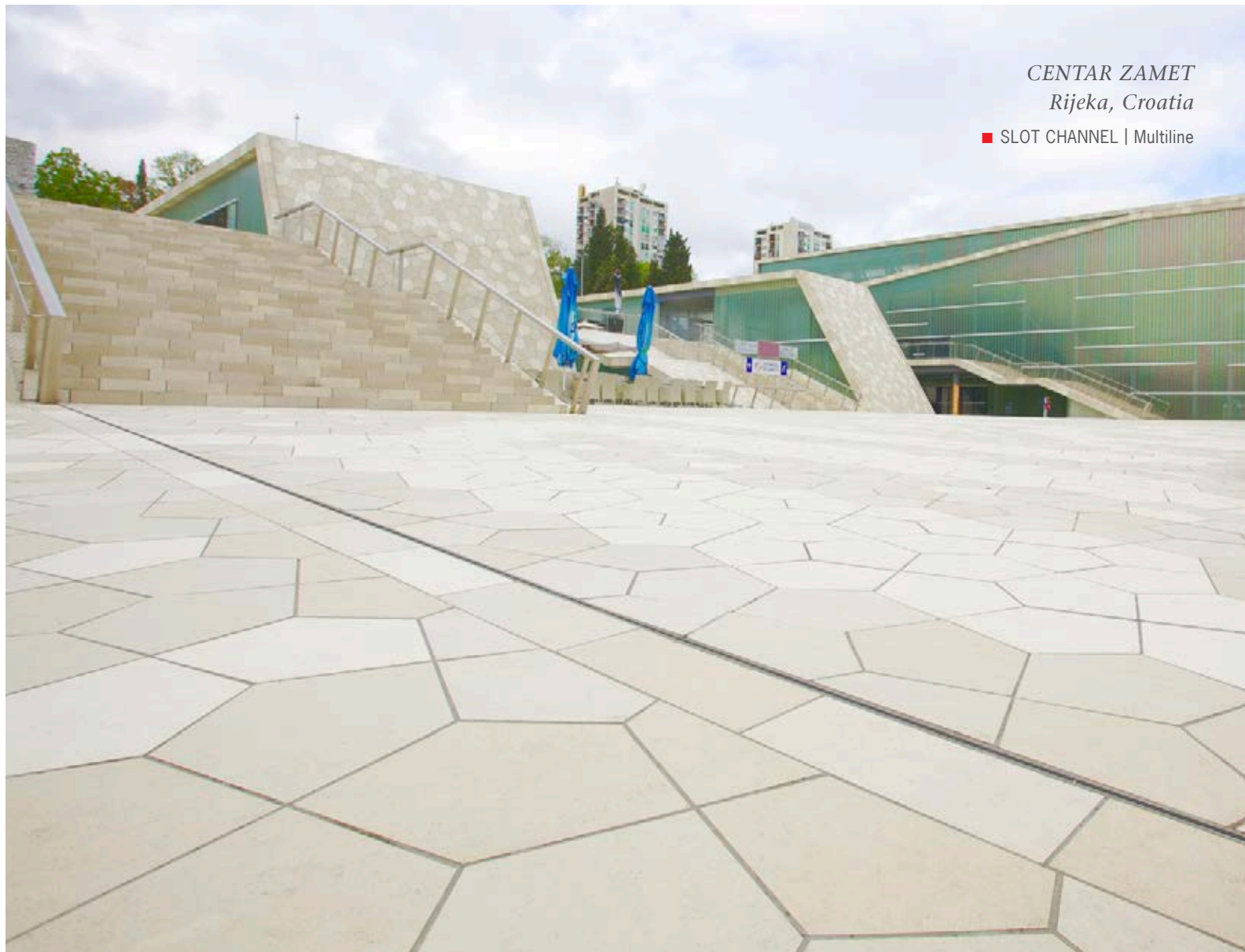
■ SLOT CHANNEL | Multifine

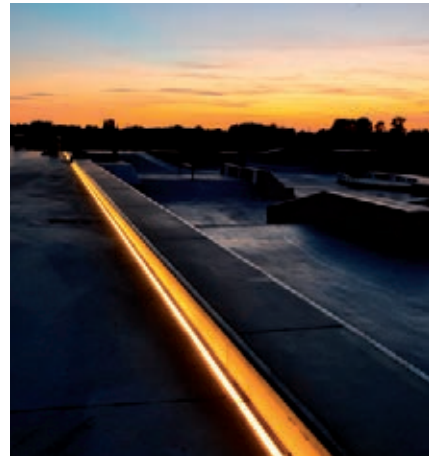
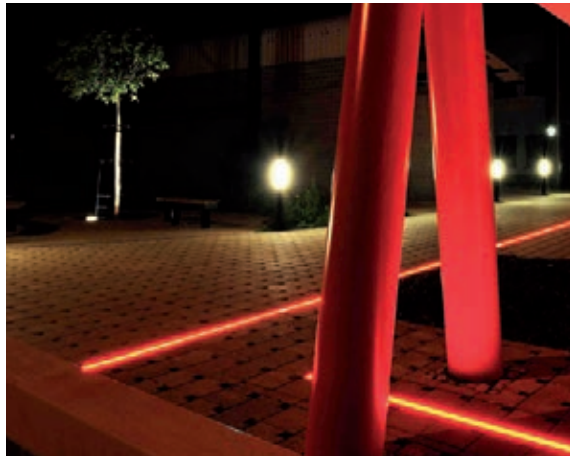
SERVISNI CENTAR
Trogir, Croatia
■ SLOT CHANNEL | Multiline



*CENTAR ZAMET
Rijeka, Croatia*

■ SLOT CHANNEL | Multiline







Line drainage with lighting

*„Light
is a symbol of
life and joy.“*

Honoré de Balzac





SCULPTURE PARK NORDART
Büdelsdorf, Germany

■ SIDELINE with LED lighting | Multiline



SOMEWHERE
Mölln, Germany

■ SLOTTED GRATING with LightPoint | Multiline



*OBEREIDERHAFEN
Rendsburg, Germany*

■ SLOTTED GRATING with LightPoint | Multiline



*THE GARDEN OFFICES
Amstelveen, Netherlands*

■ SIDELINE with LED lighting | Multiline



*BUS STATION
Herne, Germany*

■ SIDELINE with LED lighting | Multiline





SKATE PARK
Zwevezele, Belgium

■ SIDELINE with LED lighting | Multiline



*CITY CENTRE
Heide, Germany*

■ CAST IRON GRATING FREESTYLE with Eyeleds | Multiline



LE PLACE DE LA FONTAINE CHAUDE
Dax, Frankreich

■ SIDELINE with LED lighting | Multiline

INLAND HARBOUR QUAY

Kiel, Germany

■ SLOTTED GRATING with LightPoint | Multiline





ZECHE ZOLLVEREIN
Essen, Germany

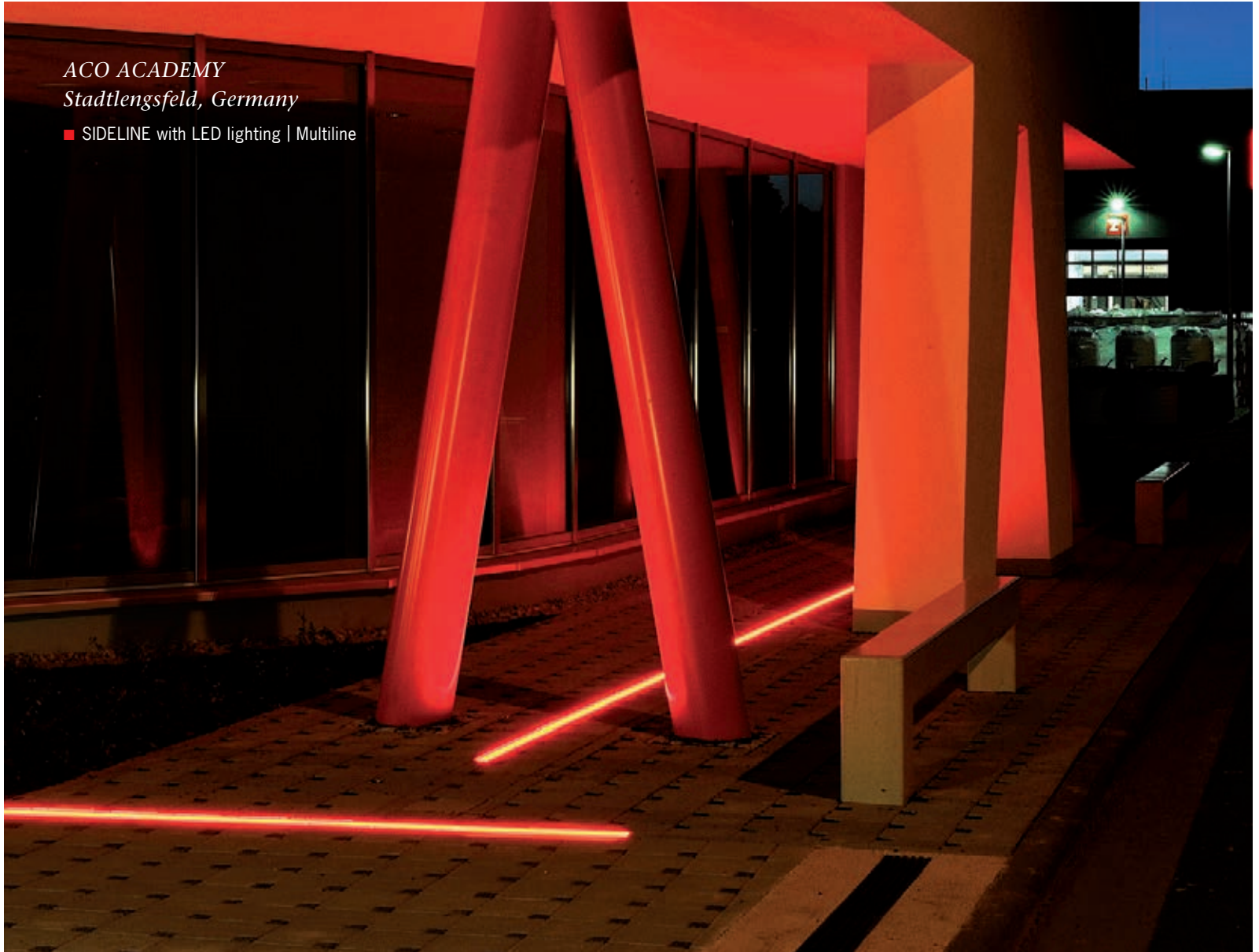
■ COMPOSITE GRATING with Eyeleds | Multiline

*„Light absorbs darkness,
creating a safe haven.“*

Pavel Kosorin

ACO ACADEMY
Stadtlengsfeld, Germany

■ SIDELINE with LED lighting | Multiline





ACO THORMANNHALLE
Büdelsdorf, Germany

■ SIDELINE with LED lighting | Multiline

SOMEWHERE
Somewhere, Germany

■ SIDELINE with LED lighting | Multiline





*STATE HORTICULTURAL SHOW
Schleswig, Germany*

■ SLOTTED GRATING with LightPoint | Multiline





Monolithic line drainage

*UNIVERSITY OF APPLIED SCIENCES
FOR ENGINEERING AND ECONOMIC
Berlin, Germany*

■ KerbDrain





*L22 – DISTRICT
Rostock, Germany*

■ KerbDrain

*KIELER YACHT-CLUB
Kiel, Germany*

■ KerbDrain





*YACHT MARINA
Kiel, Germany*

■ KerbDrain



CIRCUIT DE CATALUNYA
Barcelona, Spain

■ MONOBLOCK



*AIR BASE
Ingolstadt-Manching, Germany*

■ MONOBLOCK

VIRACOPOS AIRPORT
Campinas, Brazil

■ MONOBLOCK

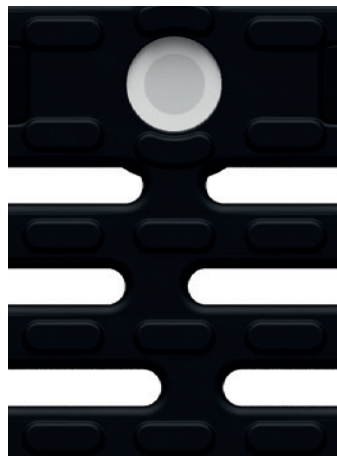




SERVISNI CENTAR
Trogir, Croatia

■ MONOBLOCK





Product & Service

- Gratings and covers 96
- Line drainage 100
- Service 104

ACO DRAIN® gratings and covers

Drainlock gratings and covers for ACO Multiline and XtraDrain

Slot grating
Galvanised steel
Stainless steel



Slot grating
Ductile iron



Slot grating
Heelguard
Ductile iron



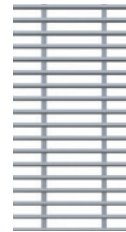
Composite
grating
silver grey
Plastic



Anti-slip
Composite
grating
Microgrip
Plastic



Cross bar
grating
Stainless steel



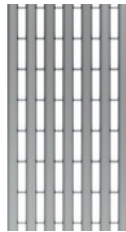
Longitudinal
bar grating
Galvanised steel
Stainless steel



Longitudinal
bar grating
Stainless steel



Longitudinal
profile grating
Galvanised steel
Stainless steel



Longitudinal
bar grating
in mesh look
Ductile iron

Mesh grating
Galvanised steel
Stainless steel

Mesh grating Q⁺
Galvanised steel
Stainless steel

Perforated
grating
Galvanised steel
Stainless steel

Cover plate
solid
Ductile iron

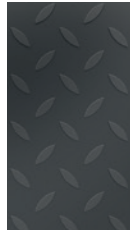
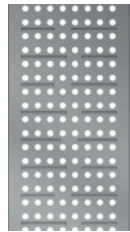
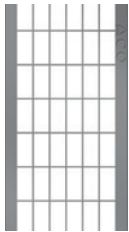
Slot channel
Galvanised steel
Stainless steel

LightPoint
Ductile iron

Eyeleds
Plastic

Sideline
Galvanised steel

Freestyle
Ductile iron
grating



Lighting

LED-lighting

LED-lighting



Gratings for ACO PowerDrain

Slot grating
Ductile iron



Ductile rails for ACO Qmax

Q-Flow
Ductile iron



Q-Guard
Ductile iron



Q-Road
Ductile iron



Monolith

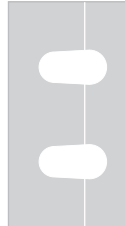
Monoblock RD
Polymer
concrete



Monoblock PD
Polymer
concrete

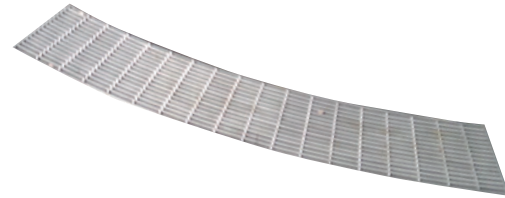


KerbDrain
Polymer
concrete



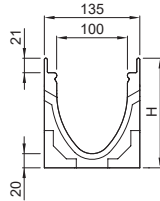
Special solutions

Radius channels
Stainless steel



ACO DRAIN® line drainage

ACO Multiline drainage channel



Load classes

- A 15 ■ C 250 ■ E 600
 - B 125 ■ D 400
- in accordance with DIN EN 1433

Nominal widths

100, 150, 200, 300, 400, 500

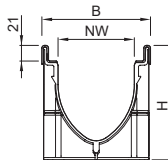
Material

Polymer concrete with steel,
stainless steel, ductile iron channel

Areas of application

- Railway plat forms
- Public paths and places
- Façade drainage
- Parking decks, car parks
- Pedestrian areas, paths/ bicycle paths
- Ramps/under ground car park entrances
- Light channels

ACO XtraDrain drainage channel



Load classes

- A 15 ■ B 125 ■ C 250
- in accordance with DIN EN 1433

Nominal widths

100, 150, 200

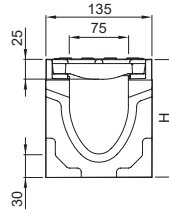
Material

Plastic (PP) with plastic edge,
galvanised steel edge

Areas of application

- Façade drainage
- car parks
- Pedestrian areas, paths/ bicycle paths
- Design and light

ACO Schwerlastrinne PowerDrain



Load classes

- A 15 ■ C 250 ■ E 600
 - B 125 ■ D 400 ■ F 900
- in accordance with DIN EN 1433

Nominal widths

75/100, 125/150, 175/200, 275/300

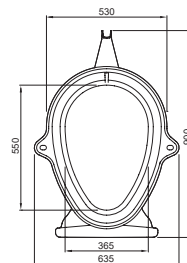
Material

Polymer concrete with ductile iron channels and gratings
Areas of application

Areas of application

- Bus stations
- Pedestrian areas
- Container transshipping facilities and roads
- Industrial surfaces
- Car parks
- Logistics facilities
- WHG-Water conservation and protection surfaces
- Service stations

ACO Retentionsrinne Qmax



Load classes

- A 15 ■ C 250 ■ E 600
 - B 125 ■ D 400 ■ F 900
- in accordance with DIN EN 1433

Nominal widths

365/550, 465/700, 600/900

Material

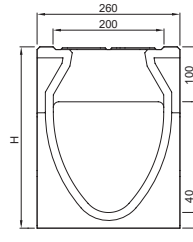
Plastic system elements made of MDPE, a recycled plastic

Areas of application

- Large sealed surfaces
- Interim storage/ rain water runoff buffering
- Logistics surfaces
- Port and industrial surfaces
- Airport surfaces

Monolithic line drainage

ACO Monoblock RD drainage channel



Load classes

■ D 400 ■ E 600 ■ F 900
in accordance with DIN EN 1433

Nominal widths

100, 200, 300

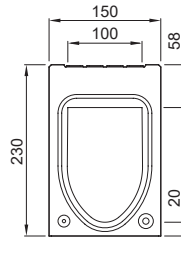
Material

Monolithic polymer concrete

Areas of application

- Motorways
- Airports
- Container transshipment facilities
- Industrial surfaces
- Truck parks
- Logistics facilities and roads
- Roadside drainage
- Water conservation and protection surfaces
- Service stations

ACO Monoblock PD drainage channel



Load classes

■ A 15 ■ D 400
in accordance with DIN EN 1433

Nominal widths

100, 200

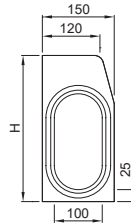
Material

Monolithic polymer concrete

Areas of application

- Motorways
- Airports
- Container transshipment facilities
- Industrial surfaces
- Truck parks
- Logistics facilities and roads
- Roadside drainage
- Water conservation and protection surfaces
- Service stations

ACO Bordsteinentwässerung KerbDrain



Load classes

- A 15
 - B 125
 - C 250
 - D 400
- in accordance with DIN EN 1433

Structural heights

305 und 480 mm

Material

Monolithic polymer concrete

Areas of application

- Bridges
- Logistics facilities and roads
- Roadside drainage

ACO Service

Service offering for our clients

Every project is different, has its own requirements and challenges. In addition to our products we also offer you our know-how and our service to co-develop bespoke solutions – for pre-planning to post project stages.

www.aco.com



train:
Information
and training

design:
Planning
and optimising

support:
Construction
consultation
and support

care:
Inspection
and maintenance

Grating configurator

The grating configurator aids choosing the best solution on the basis of visual criteria and different scenarios. The technical data on the selected gratings can be downloaded or saved in a project folder.

www.draindesign.aco

